

# TOTAL

C L O T H I N G

YOUR SCHOOL UNIFORM SUPPLIER

## EARLY BIRD OFFER

SPEND OVER £35.00  
& RECEIVE 25 FREE  
NAME TAPES (RRP £3.99)

Your name here  
Your name here  
Your name here  
Your name here  
Your name here  
Your name here  
Your name here

*When you order  
between May  
12th and 30th  
June 2021*



SCHOOLS



# DOGSTHORPE ACADEMY

## PRIMARY SCHOOL UNIFORM INFORMATION GUIDE

[www.totalclothingshop.co.uk/dogs](http://www.totalclothingshop.co.uk/dogs)

Like us on  
**facebook** 

To stay up to date  
with our latest offers.

Please check our website: [www.totalclothing.co.uk](http://www.totalclothing.co.uk)  
for the latest information updates.

PLEASE ORDER BY  
**THURSDAY 12th AUGUST**  
For delivery before  
back to school.

## INTRODUCTION

### Dear Parents & Carers

We have designed this booklet to help you to order your school uniform with ease, whilst understanding the requirements from your school.

We understand how difficult it can be when you are buying Primary school uniform for the first time (or even second or third time) as children's sizes can be so different. With this in mind, we have added some additional information to try and make it as easy as possible.

If you would like to order online, start by watching our [School Uniform Video Guide](#), along with our [Uniform Measuring Guide](#) and [Hints & Tips](#).

If you wish to collect your order from our shop, please click [here](#), for important Covid-19 related changes and information about our Click & Collect service.

Finally, click [here](#) to access your school webshop to order.

We always encourage parents to order as soon as possible to ensure you will have the correct uniform for back to school.

We have a returns policy of 28 days from your purchase to return or exchange your garments. It would be great if you can send returns as soon as possible to help with our stock levels.

We are here to help you get the best fit for school uniform for your child.

If you have any question's please call our friendly customer care team on 01733 394758 or via email at [customerservices@totalclothing.co.uk](mailto:customerservices@totalclothing.co.uk) who will be happy to advise you.

P.S Please note there will be regular updates. Please make sure to check our [website](#) before visiting us.

Kind regards

**Christine, James, Ben and Janet**

**The Schools Team | Total Clothing, part of F R Monkhouse Ltd**



SCHOOLS

## OUR SHOP



We have been supplying school uniform for nearly 30 years. Our experienced team will offer a personal service to help you choose the right uniform you need.

### Opening Times

**Monday to Friday** 9am to 5pm  
School summer holidays open until 5.30pm  
and from Saturday 17th July until Saturday  
4th September open 10am to 4pm

### Shop Address

No 9 Botolph Trading Estate  
Oundle Road, Woodston,  
Peterborough PE2 9QP  
01733 394758

### KEEP UPDATED...

PLEASE CHECK OUR [WEBSITE](#) or our [FACEBOOK](#) PAGE FOR  
UPDATED OPENING HOURS BEFORE YOU TRAVEL TO OUR SHOP.  
as we may extend our opening hours over the summer holidays.

### REMEMBER...

To bring your  
shopping  
bag!



[www.totalclothingshop.co.uk/dogs](http://www.totalclothingshop.co.uk/dogs)

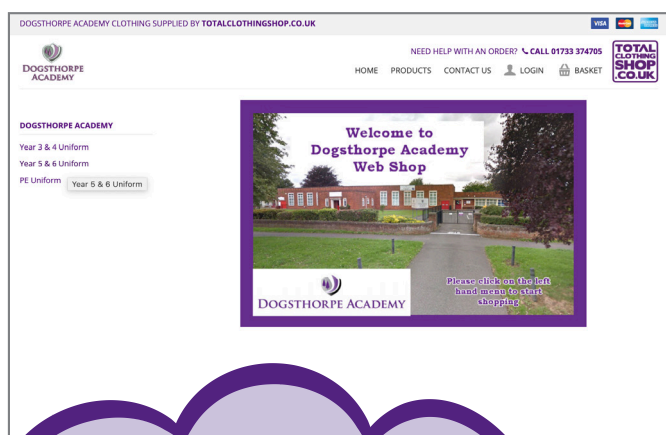
## HOW TO ORDER ONLINE



### CLICK & COLLECT

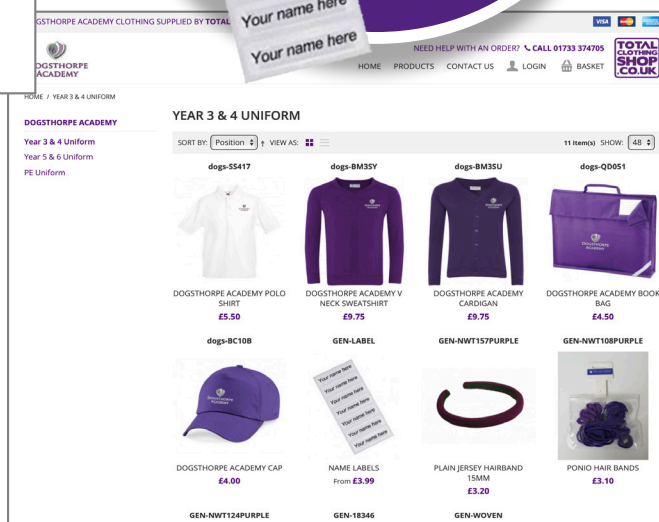
You can place your order online and collect from our shop. We have a new system in place and [Click & Collect](#) orders can now be collected from the **BACK OF OUR SHOP**. We will have new signage in place to guide you to the new area.

- Follow your school link in this booklet or alternatively you can go to [totalclothing.co.uk](http://totalclothing.co.uk) and select your school.
- Please allow 10 days from order to delivery.



### HINTS & TIPS DON'T FORGET

To order by  
**Thursday 12th August**  
for delivery before  
back to school.



## WAYS TO GET IN TOUCH...



By phone  
**01733 394758**



Live Chat  
on our website



Or email  
us directly

## RETURNS POLICY

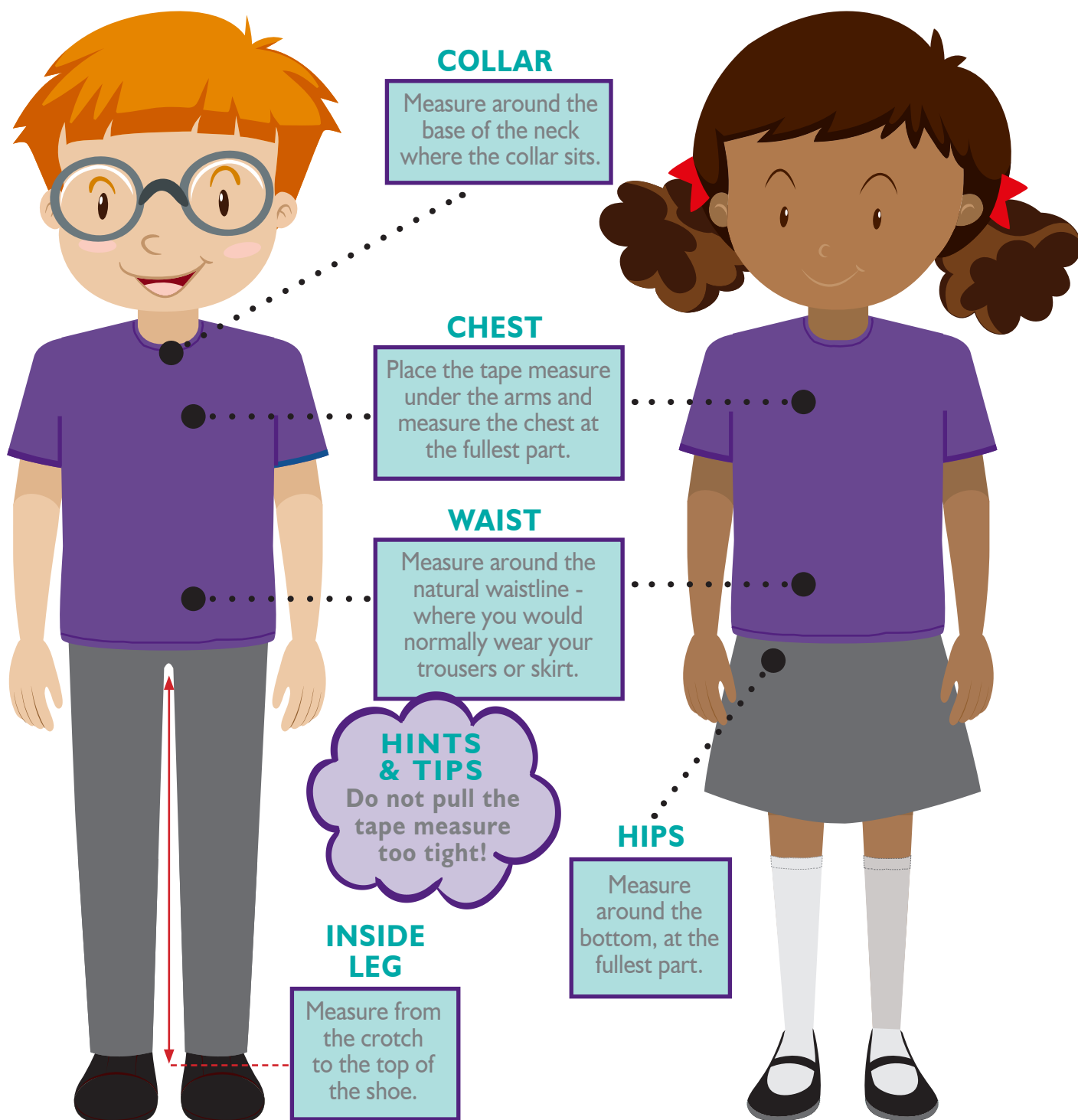
We have a returns policy of 28 days from your purchase to return or exchange your garments. It would be great if you could send your returns as soon as possible to help our stock levels.



SCHOOLS

## UNIFORM MEASURING GUIDE

### How to measure your child for school uniform





SCHOOLS

## HINTS & TIPS

### **HINTS & TIPS** **SWEATSHIRTS**

Make sure you leave enough growing room in the body and arms.

### **HINTS & TIPS** **POLO SHIRTS**

This is not a shaped garment and the polos are a generous fit. Choose the size relating to your child's age.

### **HINTS & TIPS** **PLEASE NOTE...**

All our polo shirts, sweatshirts and PE t-shirts come in age sizes. 3/4 years, 5/6 years, 7/8 years, 9/10 years, 11/12 years, and 13 years.  
\*Value polo shirts sizes differ slightly, see webshop.

### **HINTS & TIPS** **ALL OF OUR GARMENTS**

Are easy to wash and dry quickly.

### **PLEASE NOTE** **PE SHORTS**

These come in waist sizes 18/20" 22/24" 26/28" 30/32" choose the size that best fits your child's waist measurement.

### **HINTS & TIPS** **KNITTED JUMPERS & CARDIGANS**

These come in chest sizes, 26" 28" 30" 32" 34" please use your child's chest measurements for these garments.

### **HINTS & TIPS**

Please contact us should you require a size not listed on the webshop.

### **PLEASE NOTE** **REMEMBER...**

You can also buy your accessories from us: Book Bags, PE Bags, Water Bottles, Hair Accessories, Plimsoles.

### **HINTS & TIPS** **DON'T FORGET**

Don't forget we offer sew on or iron on labels to avoid uniform getting lost!



## UNIFORM ACCESSORIES

**Did you know that we also sell all the accessories you may need?**

Our prices are very competitive and include the following items:

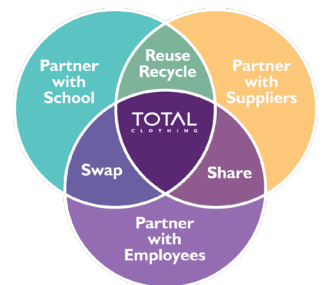
- Jackets
- PE T-shirts in your school colours
- PE Shorts
- Plimsoles
- Iron on Name Labels
- Water bottles
- Swimming goggles
- PE and Bookbags
- Hair accessories in your school colours
- Baseball hat





## TOTAL CLOTHING-SHARE-REUSE-RECYCLE

**Second-hand uniforms are becoming a credible sales channel and we host Swapping events at our store to enable parents to re-cycle grown out of school uniform rather than it going into landfill. “Long Live School Uniforms.”**



The map shows the River Nene flowing from the top right towards the bottom left. The A47 road runs diagonally from the top left to the bottom right. Oundle Road runs horizontally across the middle. Key locations marked include the City Centre (top right), Cross Keys Pub (top middle), Gordon Arms Pub (middle left), Barton Hall Hotel (bottom left), and Big Sky (bottom middle). A railway bridge crosses Oundle Road. A large green arrow points from the text 'Total Cloth No 9 Boto Oundle Road Peterborough' towards the map.

(Turn onto Botolph Bridge next to Hilton Van Hire)

**TOTAL**  
CLOTHING